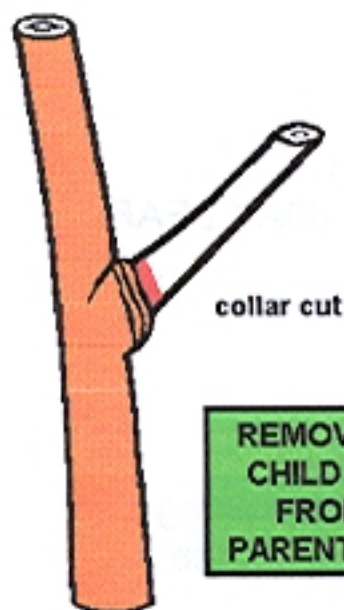


BASIC PRUNING CUTS



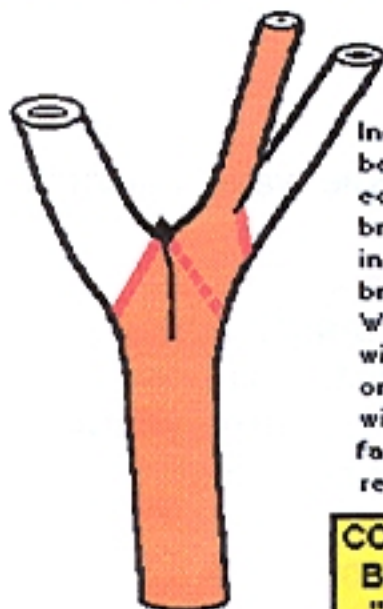
collar cut

REMOVING THE
CHILD BRANCH
FROM THE
PARENT BRANCH



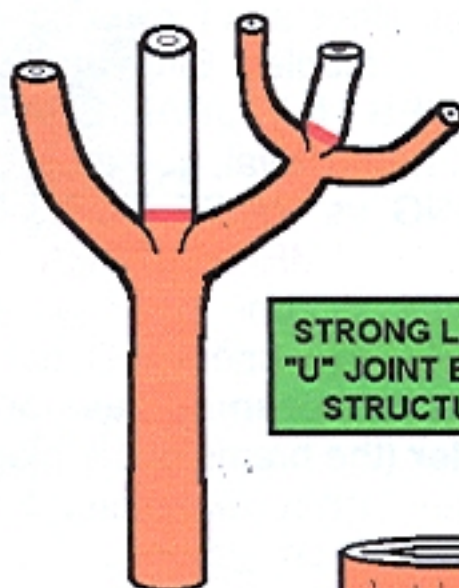
REMOVING THE
PARENT BRANCH
AND LEAVING THE
CHILD BRANCH

REMOVE BAD "V" CROTCHS AND CREATE GOOD "U" CROTCHS



Included bark between two equally sized branches result in a weakened branch structure. Weak "V" joints will split the tree or branch in a wishbone like fashion if not removed.

CO-DOMINANT
BRANCHING
"V" JOINT



STRONG LATERAL
"U" JOINT BRANCH
STRUCTURE

WOUND
REPAIR

